

# the wythall directory

june 2024

a community magazine and business directory  
for residents of wythall & hollywood

## **Sell your home with the Property Champions**

**Don't get caught offside  
call now for a FREE valuation.**



**WYTHALL: 01564 826555**  
321 Alcester Road | Wythall | B47 5HJ

**melvyn  
Danes**  
ESTATE AGENTS

[www.melvynndanes.co.uk](http://www.melvynndanes.co.uk)

#### STATION ROAD, WYTHALL



#### STATION ROAD, WYTHALL

A detached four double bedroomed bungalow. Briefly comprising; porch, hallway, lounge, kitchen/diner, breakfast room, guest cloaks w.c., ground floor master bedroom with en-suite and one further bedroom, with two further bedrooms on the first floor, family bathroom, side garage, superb rear garden and front driveway.

**Offers Around £675,000**

#### NORTON LANE, TIDBURY GREEN



#### NORTON LANE, TIDBURY GREEN

A spacious detached house, briefly comprising; entrance hallway, dining room, lounge, dining room, kitchen/breakfast room, utility room, ground floor w.c., utility, master bedroom with en-suite, guest bedroom with en-suite, two further bedrooms, family bathroom, detached double garage, rear garden with summerhouse and driveway parking.

**Offers Around £600,000**

#### DARK LANE, HOLLYWOOD



#### DARK LANE, HOLLYWOOD

An extended five bedroomed, four bathroom traditional detached spacious family home. Briefly comprising; porch, hallway, lounge, kitchen/diner, utility, study, guest cloaks w.c., master bedroom with en suite on second floor, first floor two bedrooms both with en suite, two further bedrooms, family bathroom, integral side garage, rear garden and front driveway.

**Offers Around £595,000**

#### STATION ROAD, WYTHALL



#### STATION ROAD, WYTHALL

An extended two bedroomed period cottage in this most convenient & sought after location in the village of Wythall. Briefly comprising; porch, lounge, kitchen, lobby, dining room, utility, ground floor bathroom, two bedrooms, shower room, landscaped gardens and detached garage.

**Offers Around £375,000**

# wythall

landscape centre

**We can supply everything you need to  
create a stunning garden makeover**

**Open to  
trade and  
public**



**Suppliers of quality landscaping materials  
Come and view our superior displays**

**Delivery  
service  
available**



**Delivery to  
Hollywood  
& Wythall  
£6.00**

**Open Monday to Friday 8.00 - 4.30 & Saturday 9.00 - 3.00 | Closed Sunday  
Silver St. Wythall B47 6LZ Tel: 01564 826893 [wythalllandscapecentre.co.uk](http://wythalllandscapecentre.co.uk)**

# Joyous June!

Welcome to the June edition

**There's a whole load of great events coming up – from festivals to art experiences. Fingers crossed the weather's good to us and we can get our picnic blankets out!**

Or maybe you're busy getting your garden summer ready or preparing to move house. If you need help getting your garden landscaped, your drive re-done, or your bathroom or kitchen updated then have a look to see if one of the local and reliable businesses who advertise in here can help.

Wishing you a great month ahead. Until next month,



Zoe Reece

Tel: 07557 220585

Email: [zoe@dorridgedirectory.com](mailto:zoe@dorridgedirectory.com)

[www.wythalldirectory.com](http://www.wythalldirectory.com)



## **Is your current business telecoms provider letting you down on price and service?**

TELA Technology are confident they can beat your current price plan, including mobiles. No obligation, no strings attached!

Exclusive MS Mags Offer: **3 FREE MONTHS** on your business telecoms and connectivity plan (local offer only).

**Call TELA on 01675 624 627 & mention TELA 3M3.**



**ADVERTISE HERE**

Contact Zoe Reece on 07557 220585 / [zoe@dorridgedirectory.com](mailto:zoe@dorridgedirectory.com)

**Locally designed by:** hotlobster design ltd **Printed by:** Norwood Press

**PLEASE RECYCLE THIS MAGAZINE**



**Built on trust and reliability, we have been in the roofing business for over 30 years**



**Our services include:**

- New slate and tiled roofs
- Flat roofs
- Chimneys
- Velux roof windows
- Repointing
- Roof timberwork
- Solar panel installation
- And more!

**Our highly qualified roofing experts will complete your roofing tasks, quickly and efficiently.**

**12**  
YEAR  
Guarantee

**Promise To Our Customers**

We guarantee to offer you a dependable service, offering outstanding quality at realistic prices, with your complete satisfaction being our number one priority.

**Please call John: 07854 623 592 or Office: 0330 043 6806**  
to arrange your free inspection and quotation.

# community events

## "Remember When...?"

**29th June 2pm, Knowle Village Hall**

The Knowle Village Hall Association invite you to "Remember When...?". Vintage Vocalist Amy Price will be presenting a nostalgic programme of songs from the 1940's to the 70's, guaranteed to jog your memory. Refreshments will be served during the interval. Tickets £10 (admission by ticket only) from 01564 779445 or 01564 779898.

## Dorridge Cricket Club Family Fun Day

**7th July 2pm, Dorridge**

**Cricket Club, Grange Road, Dorridge**

Dorridge Cricket Club is holding a family fun day and opening its new ground at Grange Road. There will be live music, pop-up food stalls, a BBQ and bar, cricket taster sessions and two cricket matches taking place. Everyone is welcome.

## Dolly Parton Tribute Night

**13th July 7pm, Shirley British Legion**

Join in for a night of toe-tapping tunes, dazzling costumes, and unforgettable memories as they pay tribute to the one and only Dolly Parton! Tickets from [ticketsource.co.uk](https://ticketsource.co.uk)



## Solihull Summer Fest

**20-21 July, Tudor Grange Park**

Grab tickets now for an epic festival experience filled with music, art, food, and unforgettable memories! Tickets from [solihullsummerfest.co.uk/](https://solihullsummerfest.co.uk/)

## Beyond Van Gogh – The Immersive Experience

**1 August – 1 September, The NEC**

Beyond Van Gogh: The Immersive Experience blends more than 300 of the post-Impressionist icon's paintings with cutting-edge technology and a specially curated musical soundtrack to tell the story of one of history's most influential artists. Tickets from <https://www.thenec.co.uk/>





**Stratford**  
energy solutions

**01789 262 411**  
stratfordenergy.co.uk



## Powering your Home and Business

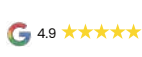
*Experts in Solar, EV Charging and Battery Storage*



**With nearly 14 years of experience installing Solar systems around the Midlands, we pride ourselves on our high-quality products and workmanship.**

**Contact Us for a FREE Quote**

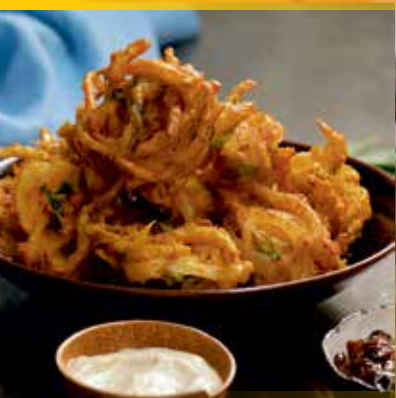
- ✓ Save on average 80% on your energy bills
- ✓ Protect yourself from rising energy prices
- ✓ Reduce your carbon footprint to help save our planet







MONSOON  
**20** YEARS  
2003-2023



**OFFER:**  
**MONDAY &**  
**TUESDAY**

**ANY STARTER**  
**ANY MAIN DISH\***  
**ANY NAN OR RICE**  
**& COFFEE\*\***

**£16.00pp**

\*(Fish, Lamb Shank  
& King Prawns  
£4 extra per dish)  
\*\* (Plain Coffee)





# book review

## The Kitchen Science Cookbook

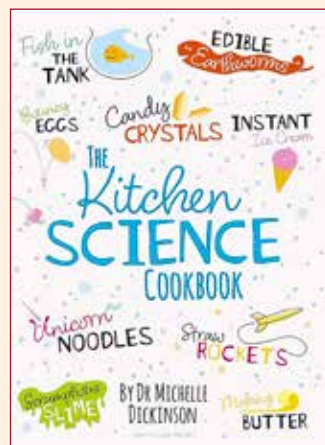
by Dr. Michelle Dickinson

This is a beautifully crafted book with a unique twist: each recipe is a science experiment that you can do at home, using the everyday ingredients you'll find in your kitchen.

You don't need to be a science expert because the easy-to-follow recipes make science experiments fun for everyone. Nanotechnologist Michelle Dickinson is on a mission to show us that we can all be scientists, no matter how young or old.

The book has an easy-to-follow format, and every experiment uses ingredients found in most kitchens. Kids will love following each recipe and learning about the science. When I set aside an afternoon to do a few experiments with my own kids I learned a lot too.

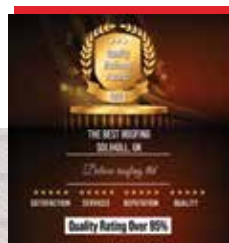
The photos show normal families doing each of the experiments, which contributes to the approachable feel of the book. In spite of it being so accessible, Dickinson, who is a serious scientist, covers the scientific method - coming up with a prediction, testing it



etc; safety precautions, and general science tips which is great for non-scientist parents like me. If you want to get your kids excited about science, this is a fabulous book.



A fully insured and highly skilled roofing company based in Solihull, West Midlands with many years experience. Deluxe Roofing Ltd is a professional, reliable roofing company with unrivalled expertise in the industry.



- New Roofs • Flat Roofs • Minor Repairs • Fascias and Guttering
- Insurance Work • Moss Removal • Rebedding of Ridge Tiles • Chimneys
- Valleys • All Guttering Cleaned and Repaired **from £49.99**

**OFFICE: 0121 314 99 53 FREEPHONE: 0800 747 14 61**

MIDLANDS BRANCH  
UNIT 70, 123 STRATFORD ROAD, SHIRLEY. B90 3ND

[WWW.DELUXEROOFINGLTD.CO.UK](http://WWW.DELUXEROOFINGLTD.CO.UK)

# AT THE FOREFRONT OF HEATING AND RENEWABLE SERVICES

---

GRANT SOUTHALL



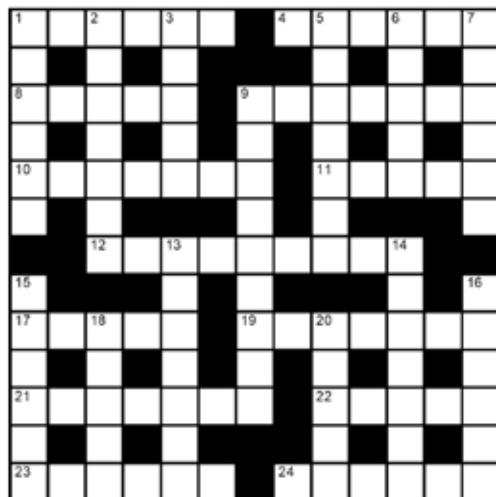
---

## CALL 07974 226 558

[WWW.GRANTJOHNSERVICES.CO.UK](http://WWW.GRANTJOHNSERVICES.CO.UK)

[G.SOUTHALLSERVICES@HOTMAIL.CO.UK](mailto:G.SOUTHALLSERVICES@HOTMAIL.CO.UK)

## crossword



## clues

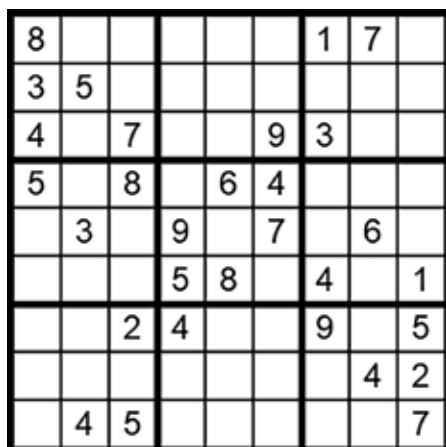
### Across

- 1 Small round stone (6)
- 4 Pristine (6)
- 8 Large black bird (5)
- 9 Zeal (7)
- 10 Type of large military ship (7)
- 11 Rectify, revise (5)
- 12 Scarlet food dye (9)
- 17 Yellow/brown (5)
- 19 Gleaned (7)
- 21 Sparkle, shine (7)
- 22 Barbecue (5)
- 23 Cantankerous (6)
- 24 Burns supper dish (6)

### Down

- 1 Robbery at sea (6)
- 2 Temporary, makeshift camp (7)
- 3 Estate, territory (5)
- 5 Recite, recount (7)
- 6 Tally, total (5)
- 7 Make fun of, insult (6)
- 9 Outlawed, prohibited (9)
- 13 The fastest big cat (7)
- 14 Deficient, incomplete (7)
- 15 Purchased (6)
- 16 Grown ups (6)
- 18 Lift (5)
- 20 Belief, principle (5)

answer on page 22



## how to play sudoku

### It's simple!

Fill in the grid so that each row, column and 3x3 box, contains the numbers 1 through to 9 with no repetition. You don't need to be a genius. These puzzles use logic alone. Watch out! Sudoku is highly addictive.

answer on page 22



**STU'S LOFT  
LADDERS**

**FREE**

**No Obligation Quote**  
10 year Manufacturer Warranty

### Installing Loft Ladders Since 2008

#### All types of loft ladders professionally installed.

Top quality 3 section aluminium loft ladder professionally fitted with pivot arm, hand rail, wide flat treads for comfort and rubber feet. Loft hatch included.

**ZARGES**

**YOUNGMAN**  
CONTRACTORS WORK AT YOURS COLLECTION

**ABRU**

**manthorpe**  
building products

### We also install loft flooring and boarding

#### Areas that we cover?

- Redditch • Solihull • Stratford-Upon-Avon
- Worcester • Warwick • Birmingham • Evesham

Tel: 01527 850295 • Mobile: 07712 327889  
stuart@stusloftladders.co.uk • www.stusloftladders.co.uk



## Super Strawberries Nature's sweet solution to wellbeing

It's the time of year to celebrate the strawberry.

The first shocker is that it is not actually a berry. It's a member of the rose family and is in fact the enlarged receptacle of a flower!

There's a lot to love about them. They're lower in both calories and sugar than fruits like apples or bananas, yet they're high in fibre and other key nutrients. They're a low-glycaemic food, which means that they have little effect on blood sugar. This makes them a tasty option for people looking to control or lower their blood glucose levels.

There are more health



benefits too. They naturally deliver vitamins, fibre, and particularly high levels of antioxidants known as polyphenols - without any sodium, fat, or cholesterol. They are among the top 20 high-antioxidant fruits and are a good source of manganese and potassium. Just one serving - about eight berries - provides more vitamin C than an orange.

Strawberries also have minerals such as calcium, iron, potassium, folate, and magnesium, along with more antioxidants called anthocyanins. Those are healthful plant compounds that also give strawberries their red colour. The redder the fruit, the more antioxidants it has.

The vitamins, minerals, and antioxidants in strawberries provide important health benefits.

Allergic reactions to strawberries usually cause symptoms such as itchy bumps, tingling, or swelling of your lips, mouth, tongue, or throat. Seek medical advice if this happens.



# Projects

## Paving & Landscaping

DRIVEWAYS & LANDSCAPE SOLUTIONS

- Clay & Block Paving • Tarmac (Red or Black)
- Patios • Brickwork • Slabbing • Gravel • Landscaping
- Fencing • Property Repairs • Roofing Repairs
- Driveway Maintenance (Pressure cleaning & Sealing - weed free)

**0121 652 0145**

Solihull

**01926 674 782**

Kenilworth, Warwick  
and Leamington

**M: 07961 358 367**

**E: [projectspaving@icloud.com](mailto:projectspaving@icloud.com)**



We pride ourselves on  
our high standards of  
workmanship

We will beat any  
like for like genuine  
written quote

Find us on Facebook



To see our current range of work carried out in your local  
area please visit **[www.projectspaving.co.uk](http://www.projectspaving.co.uk)**

328 Alcester Road  
Wythall B47 6JR

# Microchipping Made Simple

**N**ational Microchipping Month emphasizes the importance of updating your pet's microchip details to ensure they can be reunited with you if lost. This event also promotes the benefits of microchipping pets.

Microchips, about the size of a grain of rice, are implanted by a vet or trained implanter in a quick, harmless procedure, providing a permanent means of identification unlike removable collars and tags. Since April 2016, it has been mandatory for all dogs in the UK to be microchipped and registered with a government-

approved database, and starting 10th June this year, this requirement will extend to all cats by the time they are 20 weeks old.

The key advantage of microchipping is the increased likelihood of being reunited with you pet should they become lost. While microchipping for pets other than dogs and cats isn't legally required, it is highly recommended for all types of pets. Only authorized implanters, including vets and animal welfare organizations, can perform microchipping.

You can be fined up to £500 if your dog or cat is not



microchipped when they need to be. Dogs are also still required to wear a collar and tag.

If you are buying or adopting a dog or cat you should ask for proof a microchip has been fitted.

You can ask to see: a microchip certificate, vet records, or a pet passport.

For further information visit [www.gov.uk/get-your-dog-cat-microchipped](http://www.gov.uk/get-your-dog-cat-microchipped)

## JL Plumbing & Heating

James Long | [jameslongplumbing@gmail.com](mailto:jameslongplumbing@gmail.com) | 07972 214981

### All Aspects of Plumbing & Heating Undertaken

- ◆ Toilet Repairs
- ◆ Radiator Removal
- ◆ Bathroom Installations
- ◆ Boiler & Full Central Heating Installation
- ◆ Underfloor Heating
- ◆ Air Source Heat Pumps
- ◆ And Much More...

15 Years City & Guilds Experience  
No Job Too Small  
Call Out 24 Hours a Day



# DENTURE CLINIC BIRMINGHAM

New Cosmetic Dentures  
FREE CONSULTATION

Tel: 01564 703623 or M: 07516 729256

Denture  
Repairs  
while  
you  
wait



The Old Surgery, 14 Cole Bank Road  
Hall Green, Birmingham B28 8EX  
M Evans GDC NO: 125164

# DENNIS PLUMBING & HEATING

- Boiler and full central heating installations, including LPG.
- All boiler makes installed, Worcester, Vaillant, Veissmann, Glowworm.
  - 10 years warranty available on some boilers.
- Breakdowns and service on boilers, fires and cookers.
  - Power flushing service
- Vaillant approved installer

**12 year guarantee on Worcester 8000 boilers**

Fully insured, Competitive Prices

Tel: Hollywood 0121 247 1363

Mobile: 07903 715 360



[www.dennisplumbingandheating.co.uk](http://www.dennisplumbingandheating.co.uk)

## Mindbenders

Can you find the hidden phrases?

**budget budget**

**budget**

**budget** ←

**GET  
IT**

**2222 Ltd**

answers on page 22

**Time for a Spring Clean,  
Time to call SolClean.**

**Our Cleaning Services:**

- ✓ DRIVEWAYS
- ✓ PATIOS
- ✓ GROUND MOSS REMOVAL
- ✓ BRICKWORK & STONEMASONRY
- ✓ ROOFS
- ✓ GUTTERS
- ✓ FASCIAS & SOFFITS

**CALL NOW FOR A FREE QUOTE**



0121 369 0070 | 07546 264164

enquiries@solclean.co.uk • [www.solclean.co.uk](http://www.solclean.co.uk)



# The 'why' of weeds

Some gardeners say that a weed is just a plant in the wrong place. But is any unwanted plant it really a weed? Is an apple tree seedling a weed? Are the random aquilegia or California poppies softening my stone paths weeds?

Plants have one goal: to live long enough to reproduce. So sometimes these plants show up in areas they're not welcome. These plants are not technically weeds, though we might decide to treat them as such.

Then there are the plants that we know as conventional weeds, such as dandelions. Some are annuals, which live their whole life cycle in one year, and persist through a legacy of hundreds of thousands of seeds, germinating anywhere and everywhere.

Dandelions are actually perennials. They are persistent plants that love open lawn, growing into a big leafy mass with their characteristic bright yellow flowers. They also spread tens of thousands of seeds around to ensure that there are plenty more to come next year. The thing about a plant like dandelions - and this is true for many of our labelled



perennial weeds, such as nettles - is that bees and other insects love them, so they are wonderful for biodiversity.

Why DO plants show up where they're not supposed to be?

Have you ever heard the phrase, 'Nature abhors a vacuum'? It's the concept that emptiness or nothingness runs counter to the laws of nature. Space must be filled with something, and weeds have embraced this concept wholeheartedly.

It explains why weeds pop up in places such as an open, mulched area or a pristine expanse of artfully placed stone patio. You may have determined there should be nothing there, but

Mother Nature has other ideas and starts inserting plants to fill the void.

As gardeners, we like the idea of carefully selected plants placed in well-chosen spots in our landscape. That's 'design' - the conscious application of thought and the decision to grow or not grow plants in this particular place or that.

The sparsely planted landscaped garden and the heavily planted plot with barely any room between plants are garden styles at opposite ends of the spectrum. The first readily invites weeds to fill the empty spaces, but they are easy to see and remove. The second (which I favour), makes it difficult for weeds to germinate. But when they sprout - and they will - it takes a keen eye and some effort to remove them. I'm not diligent with this because the odd weed is less noticeable among all the other plants, and they are good for insect life.

Neither garden is 'correct'. The more natural landscape will ultimately be more sustainable with less weeding effort required, though when first planted, because it takes time for all those plants to grow and fill in, you'll have to deal with - you guessed it - weeds.



---

# ARDEN DRIVEWAYS & LANDSCAPING LTD

---

## Is your garden boring? Is your driveway shabby?

**Then let our creative, hardworking, and highly skilled team transform the exterior of your property.**

Not only will your outdoor space look amazing it could also add thousands to the value of your property. We've transformed hundreds of homes all over the Midlands – just search for Arden Driveways on Facebook and Instagram and you can see for yourself the quality of our work.



- ✓ EXTENSIONS & GARDEN ROOMS
- ✓ PATIOS & PATHS
- ✓ DRIVES
- ✓ LANDSCAPING, LAWNS & DECKING

**Contact us today to see how we can improve the appearance of your property and provide you with outdoor space you can be proud of.**



---

## 0121 277 4871

**Contactus@ardendriversways.co.uk**

See our work at [www.facebook.com/Ardendriversways](https://www.facebook.com/Ardendriversways)  
and [www.instagram.com/ardendriverswaysandlandscaping/](https://www.instagram.com/ardendriverswaysandlandscaping/)

# Chocolate Sorbet

Lighter than ice cream, refreshing and gluten-free!



**Prep time:** 15 mins.

**Freezing time:** 3-4 hours plus chilling time

**Serves** 4-6

## Ingredients

100g good quality dark chocolate (70% cocoa solids) broken into pieces.  
100ml filtered or mineral water  
60g cocoa powder

## For the sugar syrup

250ml filtered or mineral water  
150g caster sugar

## Method

Prepare the sugar syrup by placing the sugar and water into a saucepan. Bring to the boil without stirring and leave to simmer until the sugar crystals have dissolved (about 5 minutes). Remove from the heat. Melt the dark chocolate in a

heat-proof bowl suspended over a saucepan of just-simmering water. When it has melted add the 100ml water and reheat until warm. Whisk in the cocoa, then add the melted chocolate, whisking together until smooth.

Let the mixture cool, then chill it by placing the bowl of sorbet mixture over a bowl of water filled with ice cubes. Stir occasionally but don't let any water splash into the sorbet mix. For the smoothest results churn the chilled mixture in an ice cream maker until ready.

If you don't have an ice cream maker then place the mixture in a shallow bowl and freeze it in the coldest

part of the freezer. Take it out every hour and whisk it to break up the ice crystals. Made this way it will have a slightly more granular texture, but it will still be delicious. Remove from the freezer about twenty minutes before serving.

## Serving suggestions

Although this is lovely on its own you could try serving it with: Strawberries dipped in melted chocolate, then chilled. Rich butter shortbread (obviously not if you're on a gluten-free diet!). With a glass of coffee, chocolate or mint liqueur poured over.

# Goods Carpets & Flooring Ltd

Local Family Business. **Established 1939**

- Carpets
- Cushioned Vinyls
- Safety Flooring
- Contract & Domestic
- Tiles
- Karndean

We offer uplifting and disposal of old carpets  
moving furniture and easing of doors!

All our fitters are employed & we are NICF Retailer Members



**Karndean**  
Designflooring

**OPEN**

Mon to Fri 8.30 - 5pm

Saturday 9.00 - 2.00pm

812 Alcester Road South, Birmingham B14 5HH

**Tel: 0121 430 5289**

**FREE ESTIMATES AND SAMPLES SERVICE**



# Rightio Plumbing & Heating

0121 206 3761

## We work in

Wythall, Hollywood,  
Headley Heath, Druids  
Heath & all surrounding  
areas

## COMPETITIVE RATES

- ✓ Fast Response
- ✓ All Work Guaranteed
- ✓ Flexible Appointment Times

## 12 Month

guarantee  
on labour!

Excludes blockages

## OAP

Discount  
Speak to  
us today!

## 1-2 Hour

Emergency  
Response  
time!



650921

## OUR SERVICES

- ✓ Boiler Breakdowns
- ✓ Boiler Servicing
- ✓ Radiators & Pipes
- ✓ Tanks & Cylinders
- ✓ Toilets & Taps
- ✓ Leaks & Bursts
- ✓ Showers
- ✓ Clearing Blockages
- ✓ Pipework Replacement
- ✓ Gas Safe Certified

# Heritage

DRIVES & LANDSCAPES LTD

We pride ourselves on our high  
standards of workmanship



## Driveways & Landscapes In The West Midlands

Professional Driveway &  
Landscaping company based  
in Solihull, working throughout  
the West Midlands



Sunnyside, Kenilworth Road, Hampton in Arden B92 0LW  
[heritagedrivesltd@gmail.com](mailto:heritagedrivesltd@gmail.com)



0121 690 5581



07377 53446

[heritagedrivesandlandscapes.co.uk](http://heritagedrivesandlandscapes.co.uk)





# Mark O'Sullivan

## HOLLYWOOD CHIROPODY PODIATRIST

### Hollywood Medical Practice

Beaundesert Rd, Hollywood, Birmingham, B47 5DP

For clinics and Home Visits call:

**07824506839**

mark@hollywoodchiroprody.co.uk

www.hollywoodchiroprody.co.uk



creating beautiful storage solutions

## Hollywood Bedrooms



**fitted wardrobes • home office • bespoke furniture**

- Contemporary or traditional.
- Hinges or sliding.
- All made to measure.
- Sloping ceilings and awkward shaped rooms.
- Quality furniture fitted to the highest standard for over 25 years.

Call Neil

**07861 64 50 54**

[www.hollywoodbedrooms.co.uk](http://www.hollywoodbedrooms.co.uk)

# ADVERTISE HERE

Advertise

Contact Zoe Reece on 07557 220585 /  
zoe@dorridgedirectory.com

## WYTHALL PARISH COUNCIL

01564 823149

## WYTHALL COMMUNITY ASSOCIATION

01564 823 281

office@wythall-park.org.uk

8	6	9	3	5	2	1	7	4
3	5	1	7	4	6	2	8	9
4	2	7	8	1	9	3	5	6
5	9	8	1	6	4	7	2	3
1	3	4	9	2	7	5	6	8
2	7	6	5	8	3	4	9	1
6	8	2	4	7	1	9	3	5
7	1	3	6	9	5	8	4	2
9	4	5	2	3	8	6	1	7

## Sudoku Solution

from page 11

P	E	B	B	L	E	U	N	U	S	E	D
I	I	A				A	C	E			
R	A	V	E	N		F	E	R	V	O	U
A	O	D	O	R	R	I					
C	R	U	I	S	E	R	A	M	E	N	D
Y	A		B	T							E
		C	O	C	H	I	N	E	A	L	
B			H	D					A		A
O	C	H	R	E		D	E	D	U	C	E
U		O	E	E		O	K			U	
G	L	I	S	T	E	N		G	R	I	L
H	S		A			M	N		T		
T	E	T	C	H	Y		H	A	G	G	I

## Crossword Solution

from page 11

## local police contact for wythall & hollywood

Telephone: 101

### Health

NHS non-emergency	111
Wythall Lane Surgery	0121 628 2345
Hollywood Medical Practice	01564 822642
Hollyoaks Medical Centre	01564 823182

### Council

Bromsgrove District Council (main switchboard)	01527 881288
Bromsgrove District Council (emergency out of hours)	01527 871565

### Utilities

Electricity power cut	105
Gas leak	0800 111 9999
Severn Trent Water (supply & emergencies)	0800 783 4444

### Travel

National Rail Enquiries	03457 48 49 50
First Bus Worcestershire	0345 646 0707

### Solution to Mind benders

1. Low budget
2. Get over it
3. Two's Company

## mindbenders

from page 15

## ADVERTISE IN THIS PUBLICATION

**DON'T MISS OUT!**

Contact Zoe Reece  
on 07557 220585 /  
zoe@dorridgedirectory.com

Does your company  
need a **fresh approach**  
to marketing?



**hotlobster design** offers everything a  
business needs in this **digital world**.

Bespoke content managed websites, SEO, social media management,  
print management, logo design, clothing, copy writing and much more.

hotlobster   
design • marketing • web • print

**0121 369 1977**  
[www.hotlobster.uk.com](http://www.hotlobster.uk.com)



We are  
a local  
business  
supporting  
**Wythall &  
Hollywood.**

- Approved suppliers of Ultion and Apecs 3 Star **anti snap locks**
- Repair/Supply and fit of **windows and doors** – Certass Approved
- Misted Glass replacement
- Repair/Supply and fit of all types of **Garage doors**
- **Key cutting** including **high security**

**Call for a free quote or advice**

0121 663 6277 | 07368 508936  
www.homesecurestore.co.uk

**1835 Pershore Road, Cotteridge, Birmingham, B30 3DJ**

