

# the wythall directory

January 2023

a community magazine and business directory  
for residents of wythall & hollywood

## Are you dreaming of a new home too?

Get moving this winter with  
the great Melvyn Danes...  
**don't 'paws' for thought!**

Call now for a **FREE** valuation  
**01564 826555**

**Wythall Branch:** 321 Alcester Road, Wythall. B47 5HJ



rightmove 

**HOUNDSFIELD LANE, WYTHALL**



**HOUNDSFIELD LANE, WYTHALL**

A five bedroom detached house comprising; entrance hallway, open plan kitchen/dining/family room, utility, study and ground floor shower room, lounge with inglenook fireplace, master bedroom with en-suite, guest room with en suite, three double bedrooms, large modern family bathroom, double garage, rear garden, front & side driveways.

**Offers Over £750,000**

**STATION ROAD, WYTHALL**



**STATION ROAD, WYTHALL**

A dormer style bungalow comprising; reception hallway, extended lounge, kitchen & breakfast room, dining area and sitting room, two ground floor bedrooms, one with en-suite, bathroom, two first floor bedrooms one with en-suite, delightful rear garden and garage/store.

**Offers Around £600,000**

**HOUNDSFIELD LANE, WYTHALL**



**HOUNDSFIELD LANE, WYTHALL**

A quaint detached two bedroom cottage style bungalow in this most desirable road in Wythall with no upward chain, comprising, hallway, kitchen/diner, lounge, conservatory, shower room, two bedrooms, side garage, gardens. No upward chain.

**Offers Around £350,000**

**BEECH HOUSE, FULFORD CLOSE, WYTHALL**



**BEECH HOUSE, FULFORD CLOSE, WYTHALL**

A first floor apartment comprising; secure entrance, hallway, lounge/diner, modern kitchen, master bedroom with en suite, second double bedroom, refitted bathroom, communal gardens, allocated and visitor parking.

**Offers Around £190,000**



# MONSOON

Cafe . Dining . Lounge

WINNER OF BEST BRITISH BANGLADESHI BUSINESS OF THE YEAR 2020

POPULAR MONDAY & TUESDAY SPECIAL IS BACK

ANY STARTER  
ANY MAIN DISH\*  
ANY NAN OR RICE  
& COFFEE\*\* / MINTS

BOOKINGS RECOMMENDED

£14.80 <sup>PP</sup>

\*(FISH, LAMB SHANK & KING PRAWNS £3.50 EXTRA PER DISH) \*\* (PLAIN COFFEE)

Reserve Online

**Tel: 01564 829 200**

73-75 May Lane, Hollywood,  
Birmingham, B47 5PA

[www.monsoon.restaurant](http://www.monsoon.restaurant)





# Wishing you all a very happy 2023

Welcome to the January edition

**Here's hoping you've survived the mayhem of Christmas and are ready for a healthy and happy 2023.**

If your aim is to get fitter this year then look out for our competition to win a 3 month leisure club membership. Or if your goal is just to experience more fun events then see what's coming up on page 6 or at our online magazine [www.thelocalbuzz.co.uk](http://www.thelocalbuzz.co.uk). And if you've decide 2023 is the year to get round to updating your house or fixing all those jobs you never get round to, we have a wide range of local businesses in here who can help.

Zoe Reece

Tel: 07557 220585

Email: [zoe@dorridgedirectory.com](mailto:zoe@dorridgedirectory.com)

[www.wythalldirectory.com](http://www.wythalldirectory.com)

*Zoe*

FOLLOW US ON FACEBOOK



## What's all the buzz about!

**Want to get the most out of Solihull?**

- » Enter competitions
- » Discover local events
- » Find offers
- » Find local businesses

**Then visit [www.thelocalbuzz.co.uk](http://www.thelocalbuzz.co.uk)**



**Locally designed by:** hotlobster design ltd **Printed by:** Norwood Press

**PLEASE RECYCLE THIS MAGAZINE**

# AP ALLOYS & BUMPER REPAIRS

*Mobile service to your  
home or business*



## **ALLOY WHEEL REFURBISHMENT** *(Full Face of Wheel)*

Vandal Scratches - Plastic Bumper Damage  
Headlight Restoration - Dents + Scrapes to any panels  
Stonechips- Machine Polishing  
FREE Quotations - Main Dealer Approved

**Aircon  
Regas**  
service now  
available

Call Andy now for a fast, prompt and professional service.  
Or for an instant quote, text or WhatsApp images to him on:

# 07972 852 758

# community events

## Cinderella

**20-22 January, The Dovehouse Theatre Solihull**

Enjoy the most magical pantomime of them all! Meet Cinderella, Prince Charming, the Ugly Stepsisters and of course, the Fairy Godmother. You SHALL go to the ball! Tickets can be bought at [www.soundlighting.co.uk](http://www.soundlighting.co.uk)

## The Neil Diamond Story

**27-28 January, Core Theatre Solihull**

Bob Drury's The Neil Diamond

Story has been described in Las Vegas as one of the world's finest vocal tributes to Neil Diamond. Bob has been astounding audiences with his vocal likeness for 12 years. Tickets from [www.thecoretheatresolihull.co.uk](http://www.thecoretheatresolihull.co.uk)

## Florence + The Machine

**29 January, Resorts World Arena**

Don't miss the group who have been nominated for 6 Grammys, won 2 Brit Awards, have headlined

at Glastonbury and have received massive critical acclaim from the media. Tickets from [www.resortsworldarena.co.uk](http://www.resortsworldarena.co.uk)

## Abba Tribute Night

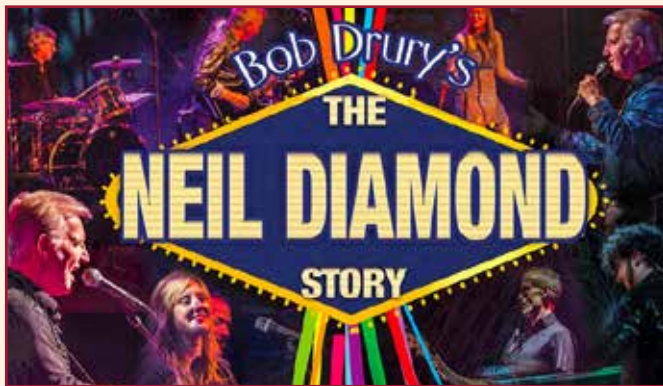
**25 February, Knowle British Legion**

The Melody Mias are an up tempo, highly engaging and totally interactive Abba duo show, that promises to add some glitter and sparkle to every event. Tickets from [skiddle.com](http://skiddle.com)

## Valentine's Dinner

**14 February, Nailcote Hall**

Want a romantic way to celebrate Valentine's Day with your loved one? Then try The Oak Room Restaurant's candlelit dinner date whilst being serenaded by guitarist Stuart Toogood. Tickets are £70 each and include a 4 course meal and glass of pink fizz. Tickets from [www.nailcotehall.co.uk](http://www.nailcotehall.co.uk)



**THE LOCAL BUZZ**  
WHAT'S GOING ON IN THE SOLIHULL AREA

FOR DETAILS ON  
MORE EVENTS  
IN SOLIHULL  
PLUS MUCH  
MORE...

**Check out our new website [www.thelocalbuzz.co.uk](http://www.thelocalbuzz.co.uk)**

# Number 1 Flooring

## *The Flooring EXPERTS*

- LAMINATES
- SOLID WOOD
- ENGINEERED WOOD
- REAL WOOD
- HERRINGBONE FLOORING
- VINYL
- CARPETS
- LVT – LUXURY VINYL TILES
- SPC VINYL FLOORING
- ACCESSORIES



**Open Monday to Saturday 9am to 6pm  
and Sunday 10.30am – 4.30pm**

**0121 745 9352**

[www.number1flooring.co.uk](http://www.number1flooring.co.uk)  
[bham@number1flooring.co.uk](mailto:bham@number1flooring.co.uk)

266-268 Stratford Road, Shirley, Solihull B90 3AD





# AT THE FOREFRONT OF HEATING AND RENEWABLE SERVICES

---

GRANT SOUTHALL



---

## CALL 07974 226 558

[WWW.GRANTJOHNSERVICES.CO.UK](http://WWW.GRANTJOHNSERVICES.CO.UK)

[G.SOUTHALLSERVICES@HOTMAIL.CO.UK](mailto:G.SOUTHALLSERVICES@HOTMAIL.CO.UK)





**STU'S LOFT  
LADDERS**

**FREE**

**No Obligation Quote**  
10 year Manufacturer Warranty

### Installing Loft Ladders Since 2008

#### All types of loft ladders professionally installed.

Top quality 3 section aluminium loft ladder professionally fitted with pivot arm, hand rail, wide flat treads for comfort and rubber feet. Loft hatch included.

**ZARGES**

**YOUNGMAN**  
PROFESSORS WORK AT ROBERT LUTHER

**ABRU**

**manthorpe**  
building products

### We also install loft flooring and boarding

#### Areas that we cover?

- Redditch • Solihull • Stratford-Upon-Avon
- Worcester • Warwick • Birmingham • Evesham

Tel: 01527 850295 • Mobile: 07712 327889  
stuart@stusloftladders.co.uk • www.stusloftladders.co.uk



## All guttering cleaned and repaired from £49.99

A fully insured and highly skilled roofing company based in Solihull, West Midlands with many years experience. Deluxe Roofing Ltd is a professional, reliable roofing company with unrivalled expertise in the industry.

- New Roofs • Flat Roofs • Minor Repairs • Fascias and Guttering
- Insurance Work • Moss Removal • Rebedding of Ridge Tiles • Chimneys
- Valleys • All Guttering Cleaned and serviced from £39.99

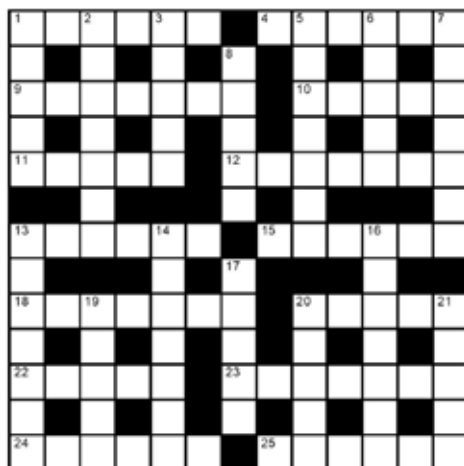
**OFFICE: 0121 314 99 53 FREEPHONE: 0800 747 14 61**

#### MIDLANDS BRANCH

UNIT 70, 123 STRATFORD ROAD, SHIRLEY. B90 3ND  
(MIDLANDS BRANCH), COVENTRY, SHIRLEY

**WWW.DELUXEROOFINGLTD.CO.UK**

## crossword



### Down

- 1 Subject matter (5)
- 2 Let go (7)
- 3 Seraph, cherub (5)
- 5 Nimbleness (7)
- 6 Beginning (5)

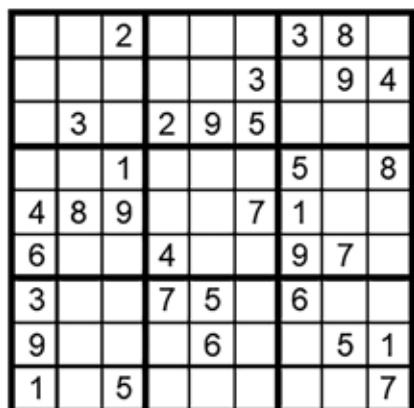
- 7 Essential feature (7)
- 8 Coalesce (5)
- 13 Captivate, fascinate (7)
- 14 Ebb, fade (7)
- 16 Kept away from (7)

## clues

### Across

- 1 Scottish plaid (6)
- 4 Entice, coax (6)
- 9 Shape with many sides (7)
- 10 Circulate, deliver (5)
- 11 Grovel (5)
- 12 Spiky plant (7)
- 13 Calendar, schedule (6)
- 15 Despot, bully (6)
- 18 Touchable (7)
- 20 Scrutinise (5)
- 22 Pretended (5)
- 23 Teeming, jammed (7)
- 24 Victim, prey (6)
- 25 Delicate, fragile (6)

answer on page 26



## how to play sudoku

### It's simple!

Fill in the grid so that each row, column and 3x3 box, contains the numbers 1 through to 9 with no repetition. You don't need to be a genius. These puzzles use logic alone. Watch out! Sudoku is highly addictive.

answer on page 26

# Goods Carpets & Flooring Ltd

Local Family Business. **Established 1939**

- Carpets
- Cushioned Vinyls
- Safety Flooring
- Contract & Domestic
- Tiles
- Karndean

We offer uplifting and disposal of old carpets  
moving furniture and easing of doors!

All our fitters are employed & we are NICF Retailer Members



**OPEN**

Mon to Fri 8.30 - 5pm

Saturday 9.00 - 2.00pm

812 Alcester Road South, Birmingham B14 5HH

**Tel: 0121 430 5289**

FREE ESTIMATES AND SAMPLES SERVICE





# Meet your local Mortgage Advisor.

**HELEN TAYLOR**

Mortgage & Protection Advisor

**I've been securing mortgages for my customers for over 22 years and can help with any mortgage advice and requirements you may need.**

The team at Oak Tree Mortgages and I offer a very hands-on and personal service with practical and honest advice. No mortgage requirements are too complicated for us – we can advise on mortgages for shift workers and the self-employed, mortgages for second homes, re-mortgaging for home improvements... or just a simple and straightforward mortgage!

For residential mortgages, we don't charge a broker fee unless the loan amount is below £100,000. We don't have ties to any specific lenders so you can be assured of the most suitable advice for your needs.

- First time mortgages
- Buy to let mortgages
- Advice on re-mortgaging
- Mortgages for home movers

**Please get in touch with me for a free consultation to discuss your mortgage requirements.**

**Book Online at [www.oaktreemortgages.com](http://www.oaktreemortgages.com)**

[helen@oaktreemortgages.com](mailto:helen@oaktreemortgages.com)

**01564 829 787**

Issued by **The Oak Tree Mortgages Partnership LLP T/A Oak Tree Mortgages**,  
321 Alcester Road, Hollywood, Birmingham B47 5HJ

The Oak Tree Mortgages Partnership LLP is a Limited Liability Partnership.  
Oak Tree Mortgages are authorised and regulated by the Financial Conduct Authority.  
The Financial Conduct Authority does not regulate some aspects of buy to let mortgages.  
There may be a fee for mortgage advice. The precise amount will depend upon your circumstances, but we estimate this to be between £0 - £349



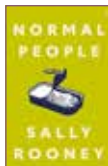
# a good read

By Natasha Donovan

## Normal People

by Sally Rooney

While this is a book written for adults I think older teens will find a lot to relate to. The book follows Marianne and Connell through their angsty, often quite pretentious adolescent years (and who among us wasn't at least a bit pretentious or obnoxious in their teens?) into the complications of early adulthood. Rooney treads a fine line between evoking irritation at two flawed, slightly unlikeable people, while making those flaws and the angst seem so raw and real that as a reader we begin to care about them. The novel is one about relationships and how they are affected by both class and social status. Marianne is a smart girl from an affluent family, but this does not protect her from being socially ostracized at school and emotionally abused at home. Connell on the other hand is from a working-class family and



enjoys an easy popularity. Connell's mother works as a cleaner for Marianne's family, and the teens are drawn to each other and begin a secret sexual relationship, but it falls apart because Connell does not want his friends to find out. By the time they meet again at university, Marianne is the popular one, and Connell is feeling increasingly depressed and isolated. They are once more drawn to each other as they navigate through a world filled with social expectations. Through Marianne and Connell, Rooney examines our need to impress and perform for others in a world that seems to grow ever more connected online, with so many things left unsaid face-to-face. Rooney has created a weird, awkward, compelling novel about weird, awkward, compelling people, who find what they really need, and a lot they don't, in each other. As Marianne spirals into self-destruction and Connell looks for meaning in his life, how far will each of them go to save the other.

## Has Your Double Glazing Steamed Up?

We can **SAVE** your windows!

All glazing backed by our

**25**  
**YEAR**  
GUARANTEE

**SAVE money, energy & time**

**Replace the pane, not the frame**



We are a  
**Which?**  
Trusted Trader

**Your local trusted expert**

**Faulty locks, handles or hinges?**



Local, friendly  
engineer

Priority freephone

**0800 6121118**

[www.cloudy2clear.com](http://www.cloudy2clear.com)

**SAVE money - SAVE energy - SAVE**



# JL Plumbing & Heating

James Long | jameslongplumbing@gmail.com | 07972 214981

## All Aspects of Plumbing & Heating Undertaken

- ◆ Toilet Repairs
- ◆ Radiator Removal
- ◆ Bathroom Installations
- ◆ Boiler & Full Central Heating Installation
- ◆ Underfloor Heating
- ◆ Air Source Heat Pumps
- ◆ And Much More...

15 Years City & Guilds Experience  
No Job Too Small  
Call Out 24 Hours a Day



### FREE\*

Mirrored cabinet  
or high raised  
toilet with any  
full bathroom  
installation

**ahm**  
installations

## Bathing a problem? We can help

- Wet rooms
- Walk in showers and baths
- Waterproof wall panelling
- Slip resistant safety flooring
- Grab rails, shower seats & raised toilets
- Disabled Facilities Grants
- Discounts for over 60s, and EX Service personnel
- Charity work and grants



Call for our friendly advice,  
free survey and quote

# 01564 336918

Checkatrade.com  
A Trade Approved Member

info@ahminstallations.co.uk www.ahminstallations.co.uk

\*Terms and conditions apply, visit our website for more details.





# DENTURE CLINIC BIRMINGHAM

New Cosmetic Dentures  
**FREE CONSULTATION**

Tel: 01564 703623 or M: 07516 729256

Denture  
Repairs  
while  
you  
wait



The Old Surgery, 14 Cole Bank Road  
Hall Green, Birmingham B28 8EX  
M Evans GDC NO: 125164

## Adele's Foot Care Solutions



*Qualified Foot Health  
Professional*

**A WIDE RANGE OF FOOT  
TREATMENTS AVAILABLE**

**Adele Smith**

MAFHP MCFHP MGHT

*Home visits*

**Tel: 01564 822926  
07802 987072**



## TIME TO EXPLORE WITH HOLLYWOOD TRAVEL

From Birmingham, Solihull and other  
local areas



Door to Door Coach Holidays  
Day Trips (with local pick up points)  
16 to 74 Seat Luxury Coaches  
Available To Hire For All Occasions

Contact us to find out more about our holidays and trips

**TEL : 0121 436 6263**

**EMAIL: OFFICE@HOLLYWOODTRAVEL.CO.UK**

**WWW.HOLLYWOODTRAVEL.CO.UK**

48 Granby Avenue, Garretts Green, Birmingham, B33 0TJ

## CARL BISHTON

CARPENTER & JOINER

**ALL ASPECTS OF BESPOKE  
JOINERY SUPPLIED AND FITTED**

- DOORS
- WINDOW FRAMES
- STAIRCASES
- CABINETS, BOOKCASES  
AND MUCH MORE

**ALL INTERIOR AND  
EXTERIOR CARPENTRY**

- SKIRTING, ARCHITRAVE
- LOFT HATCHES
- DOOR FITTING
- FITTED WARDROBES
- COMPLETE KITCHEN SUPPLY &  
FITTING SERVICE AVAILABLE
- DECKING & GARDEN BUILDINGS  
DESIGNED AND FITTED

**PLEASE CALL ME TO ARRANGE  
A QUOTATION**

**TEL: 01564 822811**

**MOBILE: 07810 373899**

**EMAIL: C-BISHTON@SKY.COM**

# Projects

## Paving & Landscaping

DRIVEWAYS & LANDSCAPE SOLUTIONS

- Clay & Block Paving • Tarmacing (Red or Black)
- Patios • Brickwork • Slabbing • Gravel • Landscaping
- Fencing • Property Repairs • Roofing Repairs
- Driveway Maintenance (Pressure cleaning & Sealing - weed free)



We pride ourselves on our high standards of workmanship

We will beat any like for like genuine written quote

0121 652 0145

Solihull

01926 674 782

Kenilworth, Warwick and Leamington

M: 07961 358 367

E: [projectspaving@icloud.com](mailto:projectspaving@icloud.com)



Find us on Facebook



To see our current range of work carried out in your local area please visit [www.projectspaving.co.uk](http://www.projectspaving.co.uk)

328 Alcester Road  
Wythall B47 6JR

## ANDY B INSTALLATIONS

Ex Woodwork Teacher  
& Lecturer in Carpentry & Joinery

For all your Woodworking requirements

Fitted Kitchens  
Internal • External doors  
Bespoke Furniture

Worktop cutout service available.

CALL  
M: 07941 396 749

View work pictures on Facebook  
Andy B Installations

## DENNIS PLUMBING & HEATING

- Boiler and full central heating installations, including LPG.
- All boiler makes installed, Worcester, Vaillant, Veissmann, Glowworm.
  - 10 years warranty available on some boilers.
- Breakdowns and service on boilers, fires and cookers.
  - Power flushing service

Fully insured, Competitive Prices

Tel: Hollywood 0121 247 1363

Mobile: 07903 715 360

[www.dennisplumbingandheating.co.uk](http://www.dennisplumbingandheating.co.uk)



## J Kelly Gardening & Fencing Services

- Fencing, sheds & shed removal
- Shed bases
- Hedge trimming
- Grass cutting
- Patio cleaning
- Turf laying
- Tree removal and pruning
- Firewood available
- Stump grinding
- Rubbish removal
- Garden clearance
- Driveways
- Brick walls
- General maintenance

07718 620 226

Email: [info@jkellygardeningservices.co.uk](mailto:info@jkellygardeningservices.co.uk)

[www.jkellygardeningservices.co.uk](http://www.jkellygardeningservices.co.uk)



# COMPETITIONS

## Win a 3 month leisure club membership\*

If you want to get healthier in 2023 then this is the perfect opportunity. You could win a 3-month membership to Club Motivation at the Crowne Plaza Solihull. Although this prize isn't just about the fitness, it's about relaxing, pampering and fun times too. Offering a friendly, personal experience they support members to become a happier, healthier you. Work out in their air-conditioned gym, take a dip in the heated indoor swimming pool, and relax in the sauna, steam room and spa.

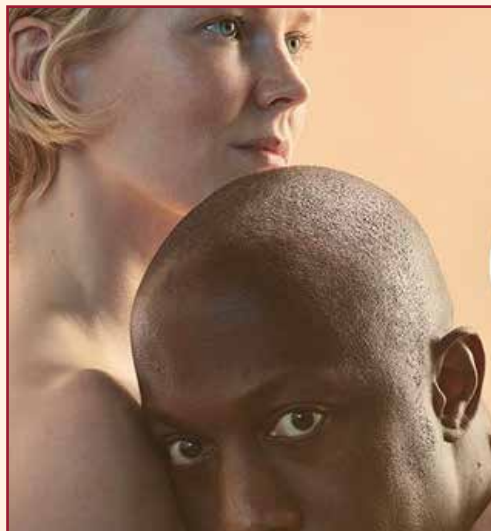


## Win 2 tickets to see NT Live - Othello

Enjoy the Encore screening of the National Theatre Live production of Othello, by William Shakespeare, on the big screen at The Core Theatre Solihull. This is an extraordinary new production of Shakespeare's most enduring tragedy. These tickets are for 23rd February at The Core Theatre Solihull.

### How to enter

For your chance to win, email [zoe@dorridgedirectory.com](mailto:zoe@dorridgedirectory.com) with the subject line Club Motivation\*\* or Othello (or both!) and you will be added to our database to receive our monthly e-newsletter about offers and events in Solihull. The winners will be notified by email after the closing date of 1st February 2023. There is no cash value nor exchange for these prizes.



\* Ts & Cs: 3-month membership must start before 1st April 2023 and is valid for 3 consecutive months. Valid at Club Motivation Solihull only and not transferable to any other hotels or leisure clubs. \*\* Please state in your email if you do not wish for Club Motivation to contact you by email.



We are  
a local  
business  
supporting  
**Wythall &  
Hollywood.**

- Approved suppliers of Ultion and Apecs 3 Star **anti snap locks**
- Repair/Supply and fit of **windows and doors** – Certass Approved
- Misted Glass replacement
- Repair/Supply and fit of all types of **Garage doors**
- **Key cutting** including **high security**

**Call for a free quote or advice**

0121 663 6277 | 07368 508936  
www.homesecurestore.co.uk

**1835 Pershore Road, Cotteridge, Birmingham, B30 3DJ**



# Shakshuka

Shakshuka is a North African and Middle Eastern dish. It makes a wonderful spicy brunch or supper for a cold January day.



**Serves: 4 with bread**  
**Cooking time:** 30-40 minutes

## Ingredients

4 tbsp olive oil  
1 onion, finely sliced  
1 red pepper, diced  
1 green pepper, diced  
6 garlic cloves, crushed  
2 tsp sweet paprika  
½ tsp cumin seeds  
½-1 tsp cayenne pepper  
800g tinned tomatoes  
(use the best quality  
you can find)  
2 tsp soft brown sugar  
1 tbsp lemon juice  
4-8 eggs, depending  
on hunger  
Small bunch of fresh  
coriander, roughly chopped

## Method

Heat the oil in a large  
frying pan (with a lid)  
and add the onion.

Fry gently until golden, then  
add the peppers and cook  
until they are soft. Stir in the  
garlic and spices and cook  
for another minute or two.

Pour in the tomatoes and  
mash roughly. Stir in the  
sugar and lemon juice. Bring  
to a boil, then turn down the  
heat and simmer for 20-30  
minutes. Taste and season.

Add a little more cayenne if  
you like your dishes spicier.

Make 4-8 hollows in the  
sauce and break an eggs  
gently into each one.

Season lightly, and turn  
the heat down as low as  
possible, cover the pan  
with the lid and cook for  
about 10 minutes until  
the eggs are just set.

Sprinkle with coriander and  
serve with crusty bread.



# WYTHALL COMMUNITY ASSOCIATION

## PARK & CLUB HOUSE

### DID YOU KNOW?

WYTHALL PARK IS A PRIVATE PARK  
AND IS NOT COUNCIL-OWNED OR  
MAINTAINED

THE LOCAL COUNCIL DO NOT  
PROVIDE MONEY FOR UPKEEP &  
MAINTENANCE

### WYTHALL COMMUNITY ASSOCIATION

REGISTERED CHARITY NO 243332

... manages and maintains the 37 acres of Wythall Park, as well as Wythall House and Park Hall. It is run by volunteers and has to raise all the money needed to maintain the park and keep it open.

### ALREADY A MEMBER BUT NOT ON OUR MAILING LIST?

Email us with your name and  
address: [membership@wythall-park.org.uk](mailto:membership@wythall-park.org.uk)

**LIMITED  
OFFER!**

**NO ADMIN FEE!  
MEMBERSHIPS  
ONLY £15 PP  
PER YEAR**

**JOIN  
US!**

### BECOME A MEMBER TODAY

Being a member means you value your local park and facilities and shows support for the work of our volunteers. It provides us with valuable funds.

### Includes membership of ...

### WYTHALL COMMUNITY CLUB

A social club whose profits benefit Wythall Community Association.

Competitively-priced drinks, a range of real ales, comfortable lounges and a family-friendly, community atmosphere.

Come and try us knowing your night out is supporting your local community!

52 Silver Street, Wythall. B47 6LZ



[WWW.WYTHALL-PARK.ORG.UK](http://WWW.WYTHALL-PARK.ORG.UK)



[WYTHALLCA](https://www.facebook.com/WYTHALLCA)



[WYTHALLPARK](https://www.instagram.com/WYTHALLPARK)



**Why not invest in a new driveway or patio to enhance the appearance and add value to your property?**

**Approved Drives and Landscapes offer a range of services to help improve all areas of your home, including:**

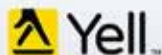
Clay & Block Paving - Tarmacing (red or black) -  
Patios - Brickwork - Slabbing - Gravel -  
Landscaping - Fencing - Property Repairs  
Roofing Repairs - Driveway Maintenance  
(Pressure cleaning & sealing - weed free)

**Proud member of**



**Find us in/on**

**Google**



**[www.centraldrivewayslimited.com](http://www.centraldrivewayslimited.com)**

**Get in touch today for a FREE quotation**

**T: 0121 702 1456 M: 07748 577687**

**[Michael.central@icloud.com](mailto:Michael.central@icloud.com)**





# Mark O'Sullivan

## HOLLYWOOD CHIROPODY PODIATRIST

### Hollywood Medical Practice

Beaudesert Rd, Hollywood, Birmingham, B47 5DP

For clinics and Home Visits call:

**07824506839**

mark@hollywoodchiroprpody.co.uk

www.hollywoodchiroprpody.co.uk



creating beautiful storage solutions

## Hollywood Bedrooms



**fitted wardrobes • home office • bespoke furniture**

- Contemporary or traditional.
- Hinges or sliding.
- All made to measure.
- Sloping ceilings and awkward shaped rooms.
- Quality furniture fitted to the highest standard for over 25 years.

Call Neil

**07861 64 50 54**

[www.hollywoodbedrooms.co.uk](http://www.hollywoodbedrooms.co.uk)

# Hollywood Beds

*Mattress & Bed Specialists*

***Leading UK Brands At Low Prices!***

**Relyon®**  
The best beds in the world

**Sealy**  
Posturepedic

  
**Sleepeeze**

**MAMMOTH®**  
MEDICAL GRADE FOAM™ TECHNOLOGY

**miBed®**  
motion intelligent

**dunlopillo®**  
NATURAL COMFORT SINCE 1929

**LARGE SHOWROOM LOCATED AT BECKETTS FARM, WYTHALL**



**FREE  
LOCAL  
DELIVERY**

**FREE  
PARKING**

**OLD BED  
REMOVAL  
SERVICE**

**OPEN  
7 DAYS  
A WEEK**

**EXPERT  
ADVICE**

**T 01564 898118**

**[www.hollywoodbeds.co.uk](http://www.hollywoodbeds.co.uk)**

**Hollywood Beds Limited, Unit 2b, Alcester Rd, Wythall B47 6AJ**



Does your company  
need a **fresh approach**  
to marketing?



**hotlobster design** offers everything a  
business needs in this **digital world**.

Bespoke content managed websites, SEO, social media management,  
print management, logo design, clothing, copy writing and much more.

hotlobster   
design • marketing • web • print

**0121 369 1977**  
[www.hotlobster.uk.com](http://www.hotlobster.uk.com)

**Bathrooms**

14 AHM Installations 01564 336918

**Beds / bedrooms**23 Hollywood Bedrooms 07861 645054  
24 Hollywood Beds 01564 898118**Car Services**

5 AP Alloys 07972 852758

**Carpenter**15 Carl Bishton 07810 373899  
17 Andy B Installations 07941 396749**Carpets & Flooring**7 Number 1 Flooring 0121 745 9352  
19 Goods 0121 430 5289**Doors and windows**13 Cloudy 2 Clear 0800 61 21 118  
27 Finesse Windows 0121 514 5270**Estate Agents**1 & 2 Melvyn Danes 01564 826555  
28 smarthomes 0121 744 4144**Gardens and Drives**16 Projects 07961 358367  
17 J Kelly 07718 620226  
22 Central Drives  
& Landscapes 0121 702 1456**Health & Wellbeing**15 Adele's Foot Care 07802 987072  
15 Denture Clinic 0121 777 5528  
Birmingham  
23 Mark O'Sullivan 07824 506839  
Chiropody**Heating**8 Grant John 07974 226558  
17 Dennis Plumbing  
& Heating 07903 715360**Locksmiths**

19 Lockfit 07368 508936

**Lofts**

9 Stu's Loft Ladders 07712 327889

**Mortgages**

12 Oaktree Mortgages 01564 829787

**Plumbing**14 James Long 07972 214981  
17 Dennis Plumbing  
& Heating 07903 715360**Restaurants**

3 Monsoon 01564 829200

**Roofing**

9 Deluxe Roofing 0800 747 1461

**Storage and wardrobes**

23 Hollywood Bedrooms 07861 645054

**Travel Agents**

15 Hollywood Travel 0121 436 6263

**Website & Graphic Design**

25 Hot Lobster Design Ltd 0121 369 1977

**WYTHALL PARISH COUNCIL**

01564 823149

**WYTHALL COMMUNITY****ASSOCIATION**

01564 823 281

office@wythall-park.org.uk

7	9	2	1	4	6	3	8	5
5	1	6	8	7	3	2	9	4
8	3	4	2	9	5	7	1	6
2	7	1	6	3	9	5	4	8
4	8	9	5	2	7	1	6	3
6	5	3	4	1	8	9	7	2
3	4	8	7	5	1	6	2	9
9	2	7	3	6	4	8	5	1
1	6	5	9	8	2	4	3	7

**Sudoku Solution**

from page 10

T	A	R	T	A	N	C	A	J	O	L
O	E	N	U	G	N	L				
P	O	L	I	G	O	N	I	S	S	U
I	E	E	I	L	E	M				
C	R	A	W	L	T	H	I	S	T	L
S			E	T						N
A	G	E	N	D	A	T	Y	R	A	N
T			W	T						V
T	A	C	T	I	L	E	P	R	O	B
R	A	N	A	R	I	I				
A	C	T	E	D	C	R	O	W	D	E
C	E	L	H	V	E	E				
T	A	R	G	E	T					

**Crossword Solution**

from page 10

**local police contact  
for wythall & hollywood**

Telephone: 101

**Health**NHS non-emergency 111  
Wychall Lane Surgery 0121 628 2345  
Hollywood Medical Practice 01564 822642  
Hollyoaks Medical Centre 01564 823182**Council**Bromsgrove District Council  
(main switchboard) 01527 881288  
Bromsgrove District Council  
(emergency out of hours) 01527 871565**Utilities**Electricity power cut 105  
Gas leak 0800 111 9999  
Severn Trent Water  
(main switchboard) 024 7771 5000  
Severn Trent Water (emergencies) 0800 783 4444**Travel**National Rail Enquiries 03457 48 49 50  
First Bus Worcestershire 0345 646 0707

# "BEST OF THE BEST..."

WHICH?



Finesse Windows are proud to have installed quality UPVC Windows, Doors and Conservatories for customers locally for 40 years. Every Finesse Windows installation is **designed, manufactured and fitted with care.**

**Call: 0121 514 5270**

**[www.finesse-windows.co.uk](http://www.finesse-windows.co.uk)**

Open weekdays 8am-5pm and Saturdays 10am-4pm  
39 Melchett Rd, Kings Norton, Birmingham, B30 3HP

*Finesse*  
WINDOWS

Windows | Doors | Conservatories | Orangeries | Fascias & Soffits | Garage Doors

# Ready to make that move?



*Josh Field*

*Make the smart move with*



**smarthomes**

## WE HAVE OVER 24 YEARS EXPERIENCE

*in selling homes just like yours*

- ✓ Josh Field is our dedicated valuer for Wythall and Hollywood
- ✓ Knowledgeable Team
- ✓ Unrivalled Marketing
- ✓ Award Winning Staff

OVER **360**



GOOGLE REVIEWS

**Speak to us about booking  
an appointment**

[smart-homes.co.uk](https://www.smart-homes.co.uk)



 **0121 744 4144** opt 2

 [shirley@smart-homes.co.uk](mailto:shirley@smart-homes.co.uk)

 316 Stratford Road,  
Shirley, Solihull, B90 3DN

sales • new homes • land • commercial • mortgages • auction